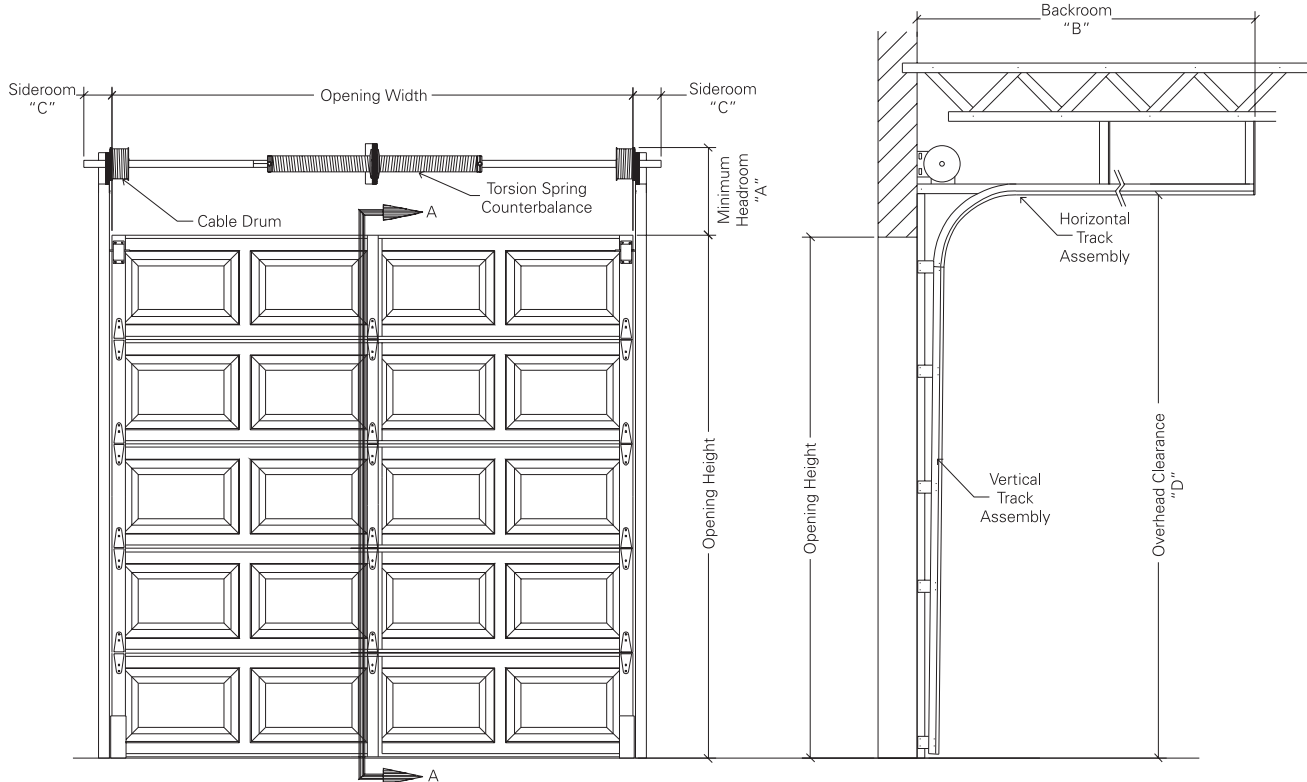


NON - INSULATED STEEL DOOR - MODEL C4RST

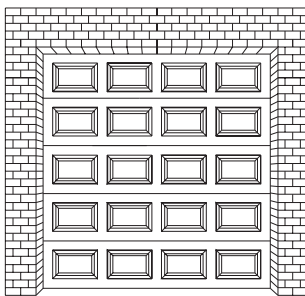
08360/IDE
Buyline 5969

- 2" Non-Insulated Steel
- 24 Gauge Steel Skin
- Raised Panel Design

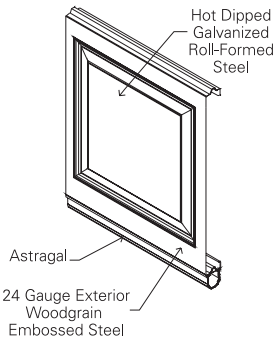


INTERIOR ELEVATION

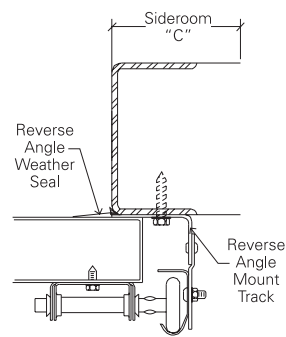
STANDARD LIFT TRACK



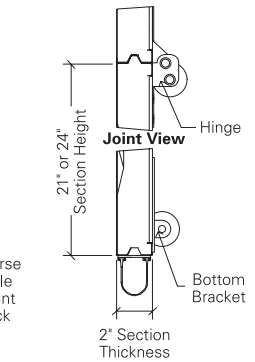
EXTERIOR ELEVATION



ISOMETRIC VIEW



STEEL JAMB DETAIL



**SECTION A-A
BOTTOM BRACKET VIEW**



SPECIFICATIONS

PART 1 GENERAL

1.01 Section Includes

A. Upward Acting Sectional Steel Doors, including unit sections, brackets, tracks, glazing, counter balance mechanisms, and hardware.

1.02 Related Work

A. Opening preparation, miscellaneous or structural steel, finish or field painting, electrical wires, wiring, disconnect switches, conduit are in the scope of the work of other sections or trades.

B. Submit manufacturer's product data and installation instructions for each type of sectional door. Include both published data and any specific data prepared for this project.

1.03 Single Source Responsibility

A. Provide door, tracks, motors and accessories from one manufacturer for each type of door. Provide secondary components from source acceptable to manufacturer of primary components.

PART 2 PRODUCT

2.01 Manufacturer

A. Upward Acting Sectional Steel Doors are to be Ideal Door® Model C4RST as manufactured by Clopay Building Products Company, Inc.

2.02 Material/Construction

A. **Type:** 2" (50.80 mm) thick, roll-formed 24 gauge (.022" (.56 mm) minimum) commercial steel.

B. **Size:** Standard maximum door size is 20'2" (6.10 m) wide by 14' (4.27 m) high.

C. **Section Joint:** Sections to form weather-tight tongue & groove fit.

D. **Material:** Hot dipped galvanized, complying with ASTM A-924, A-653, standard lift operating style with track and hardware; complying with DASMA 102, commercial application.

E. **Finish:** Pre-finished interior and exterior skins with 1 mil, three-coat baked-on polyester top coat over primer on a phosphate coating.

1. **Exterior Skin:** Exterior woodgrain textured steel skin with raised panel design. Color: white, brown, almond, bronze, sandstone.

2.03 Related Door Components

A. **End Stiles:** Galvanized steel. Attachment hardware to have pre-punched holes.

1. 18 gauge (.045" (1.14 mm) minimum) single end hinge style.

B. **Center Stiles:** 18 gauge (.045" (1.14 mm) minimum). Stiles and roll-formed section are fastened together with Tog-L-Loc™.

C. **Hinge and Roller Assemblies:** Hinges and brackets to be 14 gauge (.070" (1.78 mm) minimum) galvanized steel.

1. Ten-ball steel rollers to be full-floating ball bearing in case hardened steel races and mounted to fit the taper of the track.

2. Heavy-duty hinges and 12 gauge (.101" (2.57 mm) minimum) adjustable roller holders to be galvanized steel.

2.04 Tracks

A. **Horizontal Track:** To be 14 gauge (.075" (1.91 mm) minimum) galvanized steel reinforced with 13 gauge (.085" (2.16 mm) minimum) galvanized steel angles.

B. **Rolled Galvanized Steel** (select one): Standard lift track, vertical lift track, high lift track, follow-the-roof slope track, low headroom track-provide: 2" (50.8 mm) or 3" (76.2 mm) as required.

C. **Vertical Tracks:** To be 16 gauge (.060" (1.52 mm) minimum) galvanized steel, tapered and mounted for wedge type closing.

D. **Mounting:** Interior face mounted on a prepared surface.

E. **Track Mounting** (select one):

1. **Bracket Mounting:** Galvanized steel mounting brackets 12 gauge (.101" (2.57 mm) minimum) thick for wood jambs.

2. **Continuous or Reverse Galvanized Steel Angle Mounting:** 12 gauge (.101" (2.57 mm) minimum) angle for steel or wood jambs; splice plates 12 gauge (.101" (2.57 mm) minimum).

2.05 Spring Counterbalance

A. **Springs:** Shall be torsion type, low stress, helically wound, oil-tempered spring on a galvanized steel tube or solid steel shaft. Wire to provide 10,000 cycles minimum.

1. 25,000 cycles
2. 50,000 cycles
3. 100,000 cycles

B. **Cable Drums:** Die cast aluminum.

C. **Cable:** Pre-formed galvanized steel aircraft cable to provide a minimum of a 7:1 safety factor.

2.06 Operation

A. **Operation Shall Be:** Manual push-up chain hoist, motor operated.

B. **For Manual Operation:** Requiring maximum exertion of the greater of 5% of door weight or 25 lbs. (111.2 N) force to open. Use pull rope supplied.

2.07 Weatherstripping

A. **Field-Installed Section Joint Seal**

Tape: Neoprene foam seal, one-piece full length between joint of sections.

B. **Field-Installed Jamb/Header Weatherstripping:** Extruded vinyl, placed in moderate contact with outside of door sections.

2.08 Bottom Sections

A. **Astragal Retainer:** Full length, .040" (1.02 mm) aluminum.

B. **Astragal:** U-shaped flexible PVC vinyl.

C. **Handle:** To be located on second section.

D. **Step Plate:** 3" (76.2 mm) galvanized steel step plate to be located on bottom section.

2.09 Locking

A. Inside spring loaded slide bolt lock on end stile to securely engage slot in track.

1. Optional - Outside keyed cremone double lock bar assembly.
2. Optional - Outside keyed snap latch.
3. Optional - Outside keyed side single lock bar.

2.10 Options

A. **Removable Mullions:** 2" (50.8 mm) Carry-away or Roll-away up to 14' (4.267 m) high.

B. **Glazing:**

1. Window Size: 17" x 13" (432 mm x 330 mm).
2. Frame to be rigid Cellular PVC.
3. Glass Available:
 - a. Single glazed

C. **Full Vision Sections:** Optional Full Vision Aluminum Section.

3. Full Vision Glazing Available (select one):
 - a. DSB
 - b. 1/8" Plexiglass
 - c. 1/4" Wire glass

PART 3 EXECUTION

3.01 Examination

A. Verify that dimensions are correct and project conditions are suitable for installation. Do not proceed with installation until unsatisfactory conditions have been corrected.

3.02 Installation

A. **Installation:** To be by an authorized Ideal Door representative and in accordance with manufacturer's instructions and standards.

B. Submit manufacturer's product data and installation instructions for each type of sectional upward acting door. Include both published data and any specific data prepared for this project.

Note to Specifiers... Please reference Clopay® brand model 692.